



# MR-GLASS®



# PRODUCT CATALOG 2024



RESIDENTIAL & COMMERCIAL



# WE MANUFACTURE IMPACT DOORS & WINDOWS

- Impact Doors
- Non-Impact Doors
- Impact Storefronts
- Non-Impact Storefronts
- Impact Curtains Wall Systems
- Single Hung Windows
- Horizontal Roller Windows
- Sliding Glass Doors
- French Doors
- Casement Windows
- Project out Windows
- Fixed Windows
- Custom Shape Windows
- Interior Office Partitions

## WHY SHOULD YOU USE OUR PRODUCT?



### HURRICANE PROTECTION

*Provides superior protection against hurricanes and extreme weather conditions, ensuring the safety of your home and family.*



### SECURITY

*Enhanced security features for peace of mind, protecting your home against forced entry and intruders.*



### ENERGY EFFICIENCY

*Designed to improve energy efficiency, reducing utility costs by maintaining a comfortable temperature inside your home.*



### NOISE REDUCTION

*Minimizes external noise, creating a quieter and more peaceful indoor environment.*



### UV PROTECTION

*Blocks harmful UV rays, preserving your furniture, flooring, and belongings from sun damage.*



### INSURANCE PREMIUM DISCOUNTS

*May qualify for insurance premium discounts, providing additional cost savings for homeowners.*



### INCREASED PROPERTY VALUE

*Adds value to your property with durable, high-quality impact windows and doors.*





**RESIDENTIAL**  
PRODUCT



**MR-GLASS**



**MG-200**

**IMPACT RESISTANT  
SINGLE HUNG WINDOW**



- Max. Dimensions: 53-1/8" x 96"
- Meets Florida Building Code for High Velocity Hurricane Zone. Large and Small missile rated.
- Sturdy Construction allows for very high wind loads up to 140 PSF.
- Glazing applied with high strength silicone for elevated resistance to impact and cyclic loads.
- 2-7/8" deep frame. Glazing Capabilities: Heat strengthened laminated (5/16" & 7/16") and Insulated glass up to 11/16" thick. Enhanced thermal performance with low-E coating available.
- Hybrid "Ultralift"® balances for ease of operation come standard.
- Powder Coating aluminum finish for superb quality and environmentally friendly operation. Meets AAMA 2604 exigencies (5 year warranty) AAMA 2605 is also available (10 year warranty).

**FLORIDA PRODUCT APPROVAL**

FL #20352.1 LMI - FL #20352.2 SMI





**MR-GLASS**



**MG-250**

IMPACT RESISTANT  
SINGLE HUNG WINDOW WALL SYSTEM



- Max Dimensions of each module 48" x 120".
- Modular Design and allows for multiple units connected side by side.
- Meets Florida Building Code for High Velocity Hurricane Zone. Large and small missile rated.
- Sturdy Construction allows for very high wind loads up to 120 PSF.
- 6" deep system. Glazing Capabilities: Heat Strengthened Laminated (7/16" ) and Insulated glass up to 7/8" thick. Enhanced thermal performance with low-E coating available.
- Suitable for high rise applications. Accommodates structure movement, expansion and contractions.
- Hybrid "Ultralift" ® balances for ease of operation come standard.
- Powder Coating aluminum finish for superb quality and environmentally friendly operation. Meets AAMA 2604 exigencies (5 year warranty) AAMA 2605 is also available (10 year warranty).

**FLORIDA PRODUCT APPROVAL**

FL #41845.1 LMI - FL #41845.2 SMI

**SALES@MRGLASSWINDOWS.COM**  
**WWW.MRGLASSWINDOWS.COM**  
**8051 NW 79TH PL, MEDLEY, FL 33166**





**MR-GLASS**



**MG-300**

IMPACT RESISTANT  
HORIZONTAL SLIDING WINDOW



- Featuring oversized dimensions: 127 5/8" x 74"
- Meets Florida Building Code for High Velocity Hurricane Zone. Large and Small missile rated.
- Sturdy Construction allows for very high wind loads up to 140 PSF.
- Glazing applied with high strength silicone for elevated resistance to impact and cyclic loads.
- 2-7/8" deep frame. Glazing Capabilities: Heat strengthened laminated (5/16" & 7/16") and Insulated glass up to 7/8" thick. Enhanced thermal performance with low E coating available.
- OX, XO and XOX configurations available.
- Powder Coating aluminum finish for superb quality and environmentally friendly operation. Meets AAMA 2604 exigencies (5 year warranty) AAMA 2605 is also available (10 year warranty).

**FLORIDA PRODUCT APPROVAL**  
FL #20359.1 LMI - FL #20359.2 SMI

[SALES@MRGLASSWINDOWS.COM](mailto:SALES@MRGLASSWINDOWS.COM)  
[WWW.MRGLASSWINDOWS.COM](http://WWW.MRGLASSWINDOWS.COM)  
8051 NW 79TH PL, MEDLEY, FL 33166





**MR-GLASS**



# MG-350 (HR)

IMPACT RESISTANT  
HORIZONTAL ROLLING WINDOW

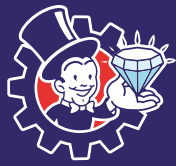


- Meets Florida Building Code for High Velocity Hurricane Zone. LMI Rated.
- DP= +/-65 PSF.
- Sizes: OX/XO up to 83 5/8" x 63" and XOX up to 111 5/8" x 63".
- Slim structure to maximize glass view and day light opening.
- Extrusions are 2-3/16" deep to have the minimal impact on interior finish during retrofit.
- Machine glazed with silicone GE 2000/DS795.
- Laminated Heat Strengthened Glass with 0.09 thick PVB as interlayer.
- Silicone glazing gasket and stainless steel screws.
- Clear, tinted, or reflective glass. Low-e glass for enhanced Solar Heat Gain Coefficient while allowing maximal transparency and visual light transmittance.
- Powder coat finish. Standard and custom colors. Meeting AAMA 2604 as standard finish (5 years warranty) with possibility to upgrade to AAMA 2605 (10 years warranty).
- Wheels in PMO (Acetal) for smooth operation.
- Aluminum 6063T6 structure.
- Colonials for design freedom.

**FLORIDA PRODUCT APPROVAL**  
FL #41890.1 LMI

SALES@MRGLASSWINDOWS.COM  
WWW.MRGLASSWINDOWS.COM  
8051 NW 79TH PL, MEDLEY, FL 33166





**MR-GLASS**



# MG-350 (SH)

IMPACT RESISTANT  
SINGLE HUNG WINDOW



- Meets Florida Building Code for High Velocity Hurricane Zone. LMI Rated.
- DP= +65/-80 PSF.
- Sizes up to 53 5/8 x 76".
- Slim structure to maximize glass view and day light opening.
- Extrusions are 2-3/16" deep to have the minimal impact on interior finish during retrofit.
- Machine glazed with silicone GE 2000/DS795.
- Laminated Heat Strengthened Glass with 0.09 thick PVB as interlayer.
- Silicone glazing gasket and stainless steel screws.
- Clear, tinted, or reflective glass. Low-e glass for

- enhanced Solar Heat Gain Coefficient while allowing maximal transparency and visual light transmittance.
- Powder coat finish. Standard and custom colors. Meeting AAMA 2604 as standard finish (5 years warranty) with possibility to upgrade to AAMA 2605 (10 years warranty).
- Aluminum 6063T6 structure.
- Colonials for design freedom

**FLORIDA PRODUCT APPROVAL**  
FL #41887.1 LMI

[SALES@MRGLASSWINDOWS.COM](mailto:SALES@MRGLASSWINDOWS.COM)  
[WWW.MRGLASSWINDOWS.COM](http://WWW.MRGLASSWINDOWS.COM)  
8051 NW 79TH PL, MEDLEY, FL 33166





**MR-GLASS**



# MG-350 (PW)

IMPACT RESISTANT  
FIXED PICTURE WINDOW



- Meets Florida Building Code for High Velocity Hurricane Zone. LMI Rated.
- DP= +/-65 PSF.
- Sizes: 48" x 84" / 36" x 108" / 24" x 168".
- Slim structure to maximize glass view and day light opening.
- Extrusions are 2-3/16" deep to have the minimal impact on interior finish during retrofit.
- Shapes and Figures available, colonials for design freedom.
- Meets ANSI Z97.1 (Human fall/impact protection).
- Machine glazed with silicone GE 2000/DS795.
- Laminated Heat Strengthened Glass with 0.09 thick PVB as interlayer.
- Clear, tinted, or reflective glass. Low-e glass for enhanced Solar Heat Gain Coefficient while allowing maximal transparency and visual light transmittance.
- Silicone glazing gasket and stainless steel screws.
- Powder coat finish. Standard and custom colors. Meeting AAMA 2604 as standard finish (5 years warranty) with possibility to upgrade to AAMA 2605 (10 years warranty).
- Aluminum 6063T6 structure.

**FLORIDA PRODUCT APPROVAL**  
FL #41889.1 LMI

SALES@MRGLASSWINDOWS.COM  
WWW.MRGLASSWINDOWS.COM  
8051 NW 79TH PL, MEDLEY, FL 33166





**MR-GLASS**



**MG-400**

IMPACT RESISTANT  
FIXED PICTURE WINDOW



- Max. Dimensions: 48" x 84".
- Meets Florida Building Code for High Velocity Hurricane Zone. Large missile rated.
- Matches with MG-200 and MG-300 single hung and horizontal roller series.
- Shapes and arches are available.
- Glazing applied with high strength silicone for elevated resistance to impact and cyclic loads.
- 2-7/8" deep frame. Glazing capabilities: Heat strengthened laminated 7/16" and Insulated glass up to 13/16" thick. Enhanced thermal performance with low E coating available.
- Design Pressures up to +/- 100 PSF.
- Powder Coating aluminum finish for superb quality and environmentally friendly operation. Meets AAMA 2604 exigencies (5 year warranty) AAMA 2605 is also available (10 year warranty).

**FLORIDA PRODUCT APPROVAL**  
FL #37319.1 LMI

[SALES@MRGLASSWINDOWS.COM](mailto:SALES@MRGLASSWINDOWS.COM)  
[WWW.MRGLASSWINDOWS.COM](http://WWW.MRGLASSWINDOWS.COM)  
8051 NW 79TH PL, MEDLEY, FL 33166





**MR-GLASS**



**MG-450**

**IMPACT RESISTANT  
FIXED PICTURE WINDOW**



- Versatile series that can be manufactured as fixed glass window, louver or a combination of both.
- Meets Florida Building Code for High Velocity Hurricane Zone. Large and Small missile rated.
- Includes intermediate horizontals (verticals depending on orientation).
- Mitered cuts and assembly via fixed corner and alignment keys. For figures and arches, corner keys and alignment keys are adjustable. Drained pockets with Hi-Flo® valves and screw covers.
- Glazing capabilities 7/16", 9/16" Laminated and 13/16" insulated laminated.
- Max Dimensions as Fixed Window: 48" x 180" Design Pressures: +80/-80 PSF.
- Max. Dimensions as Louvers 60" x 168" Design Pressures: +/- 80 PSF.
- Louvers compatible with MG 3000 door and impact rated.
- Powder Coating aluminum finish for superb quality and environmentally friendly operation. Meets AAMA 2604 exigencies (5 year warranty) AAMA 2605 is also available (10 year warranty).

**FLORIDA PRODUCT APPROVAL**  
FL #40676.1 LMI - FL #40676.2 SMI

**SALES@MRGLASSWINDOWS.COM**  
**WWW.MRGLASSWINDOWS.COM**  
**8051 NW 79TH PL, MEDLEY, FL 33166**





**MR-GLASS**



**MG-600**

**IMPACT RESISTANT  
AWNING AND CASEMENT WINDOW**



- Meets Florida Building Code for High Velocity Hurricane Zone. Large and Small missile rated.
- Up to 3 windows in any combination, in the same frame. Intermediate mullions are included inside the frame. Transoms on top and bottom are possible, and are included in one single frame.
- Sterling and Stormbalance Hinges in Stainless Steel. Egress or Washability hinges available.
- Dyad, Dual Arm and Single Arm operators all in Stainless Steel. Fall protection device available.
- Max. Dimension of a single window: 38 9/16" x 76" Design Pressures: up to +80 / -100 PSF.
- Glazing capabilities: 5/16" and 7/16" laminated and 11/16" insulated laminated.
- Powder Coating aluminum finish for superb quality and environmentally friendly operation. Meets AAMA 2604 exigencies (5 year warranty) AAMA 2605 is also available (10 year warranty).

**FLORIDA PRODUCT APPROVAL**  
FL #29675.1 LMI (AWNING WINDOW)  
FL #29676.1 LMI (CASEMENT WINDOW)

[SALES@MRGLASSWINDOWS.COM](mailto:SALES@MRGLASSWINDOWS.COM)  
[WWW.MRGLASSWINDOWS.COM](http://WWW.MRGLASSWINDOWS.COM)  
8051 NW 79TH PL, MEDLEY, FL 33166





**MR-GLASS**



# MG-1000

IMPACT RESISTANT SLIDING GLASS DOOR  
2 TRACKS / 4 PANELS



- Meets Florida Building Code for High Velocity Hurricane Zone. Large and Small missile rated.
- Sturdy design capable of design pressures up to +120/-140 PSF designed for high rise buildings.
- Max. Dimensions per panel 48" x 144" and 72" x 96".
- Jamb unanchored up to 108" high.
- Pocket configurations available.
- Rain screen design with sill 2-5/8" high. No sill raiser required up to +120PSF.
- Configurations: XO, OX, OXO, XOX, OXXO.
- No anchors apparent. Cover caps at jambs, sill, and head.
- Glazing capabilities 9/16" laminated and 1-3/16" insulated laminated. Enhanced thermal performance with low E coating available.
- Glazing applied with high strength silicone for elevated resistance to impact and cyclic loads.
- Powder Coating aluminum finish for superb quality and environmentally friendly operation. Meets AAMA 2604 exigencies (5 year warranty) AAMA 2605 is also available (10 year warranty).

**FLORIDA PRODUCT APPROVAL**  
FL #19092.1 LMI - FL #19092.2 SMI

[SALES@MRGLASSWINDOWS.COM](mailto:SALES@MRGLASSWINDOWS.COM)  
[WWW.MRGLASSWINDOWS.COM](http://WWW.MRGLASSWINDOWS.COM)  
8051 NW 79TH PL, MEDLEY, FL 33166





**MR-GLASS**



# MG-1100

IMPACT RESISTANT MULTITRACK  
SLIDING GLASS DOOR. 3 TRACKS / 6 PANELS



- Meets Florida Building Code for High Velocity Hurricane Zone. Large and Small missile rated.
- Sturdy design capable of design pressures up to +80/-100 PSF. Designed for high rise buildings.
- Max. Dimensions per panel 60" x 120".
- Jamb's unanchored.
- Pocket configurations available.
- Screen inside as option.
- Multiple configurations.
- Glazing capabilities 9/16" laminated and 1-3/16" insulated laminated. Enhanced thermal performance with low E coating available.
- Glazing applied with high strength silicone for elevated resistance to impact and cyclic loads.
- Powder Coating aluminum finish for superb quality and environmentally friendly operation. Meets AAMA 2604 exigencies (5 year warranty) AAMA 2605 is also available (10 year warranty).

**FLORIDA PRODUCT APPROVAL**  
FL #25959.1 LMI - FL #25959.2 SMI

[SALES@MRGLASSWINDOWS.COM](mailto:SALES@MRGLASSWINDOWS.COM)  
[WWW.MRGLASSWINDOWS.COM](http://WWW.MRGLASSWINDOWS.COM)  
8051 NW 79TH PL, MEDLEY, FL 33166





**MR-GLASS**



# MG-1500

IMPACT RESISTANT SLIDING GLASS DOOR  
2 TRACKS / 4 PANELS



- Meets Florida Building Code for High Velocity Hurricane Zone. Large and Small missile rated.
- Slim and modern design, ideal for residential and mid rise commercial projects. Interlock section 1-3/8" wide.
- Design Pressures +65/80 PSF. Max. panel size 48" x 108".
- Zamak roller housing with stainless steel ball bearing and PMO wheels.
- Glazing capabilities 7/16" laminated. Enhanced thermal performance with low E coating available.
- Easy installation. Unanchored jambs. 5" deep frame.
- Screen runs outside.
- Powder Coating aluminum finish for superb quality and environmentally friendly operation. Meets AAMA 2604 exigencies (5 year warranty) AAMA 2605 is also available (10 year warranty).

**FLORIDA PRODUCT APPROVAL**  
FL #38057.1 LMI - FL #38057.2 SMI

[SALES@MRGLASSWINDOWS.COM](mailto:SALES@MRGLASSWINDOWS.COM)  
[WWW.MRGLASSWINDOWS.COM](http://WWW.MRGLASSWINDOWS.COM)  
8051 NW 79TH PL, MEDLEY, FL 33166





**MR-GLASS**



**MG-3000**

IMPACT RESISTANT  
OUTSWING ENTRY DOOR



- Meets Florida Building Code for High Velocity Hurricane Zone. Large Missile rated.
- Available configurations: X, XX, OX, OXO, OXXO, O.
- Maximum dimensions: X configuration: 48" x 120", OXXO config: 156" x 120".
- Side-lites with matching top and bottom horizontal lines.
- Stand along Single Side-lites available.
- High Bottom Rail Door available.
- Aluminum, Ball-Bearing (Stainless Steel) and Continuous Aluminum Geared Hinges available.
- Max. Design pressures: +/-80 PSF.
- Glazing capabilities 7/16" laminated and 1" insulated laminated. Enhanced thermal performance with low E coating available.
- Solid. Infill available.
- Multiple glass lites per door panel (intermediate horizontals) allowing combinations of privacy, clear or tinted glass.
- Powder Coating aluminum finish. Meets AAMA 2604 exigencies (5-year warranty) AAMA 2605 is also available (10-year warranty).
- Industry Standard Hardware preparation: options for 3 Point Locks and Smart Locks.
- Flush Bolts at top and bottom.
- Muntins and Raised Grid for design freedom.

**FLORIDA PRODUCT APPROVAL**  
FL #26942.1 LMI

[SALES@MRGLASSWINDOWS.COM](mailto:SALES@MRGLASSWINDOWS.COM)  
[WWW.MRGLASSWINDOWS.COM](http://WWW.MRGLASSWINDOWS.COM)  
8051 NW 79TH PL, MEDLEY, FL 33166





**MR-GLASS**



**MG-4000**

IMPACT RESISTANT  
PIVOT DOOR



- Meets Florida Building Code for High Velocity Hurricane Zone. Large missile rated.
- Modern and slim design with maximum sizes of 72" x 144". Design Pressures: Max. +/- 70 PSF.
- Multi-point lock with 16 mm stainless steel face plate. Minimum 8-point lock.
- Glazing capabilities: 9/16" HS laminated glass with 0.09 SGP. Enhanced thermal performance with low-E coating available.
- ADA hydraulic pivot available.
- Day latch option.
- First in class hydraulic pivot fully mortised in bottom rail (no case to be inserted in the floor or head). Capable for up to 770 lbs. Adjustable latching control. Adjustable

damper/back check control.

- Flush magnets are standard for a seamless (perfectly flush) door-jamb alignment.
- Retractable top pivot for ease of installation. Top pivot allows for panel adjustment.
- Powder Coating aluminum finish. Meets AAMA 2604 exigencies (5 year warranty) AAMA 2605 is also available (10 year warranty).

**FLORIDA PRODUCT APPROVAL**  
FL #41657.1 LMI

SALES@MRGLASSWINDOWS.COM  
WWW.MRGLASSWINDOWS.COM  
8051 NW 79TH PL, MEDLEY, FL 33166



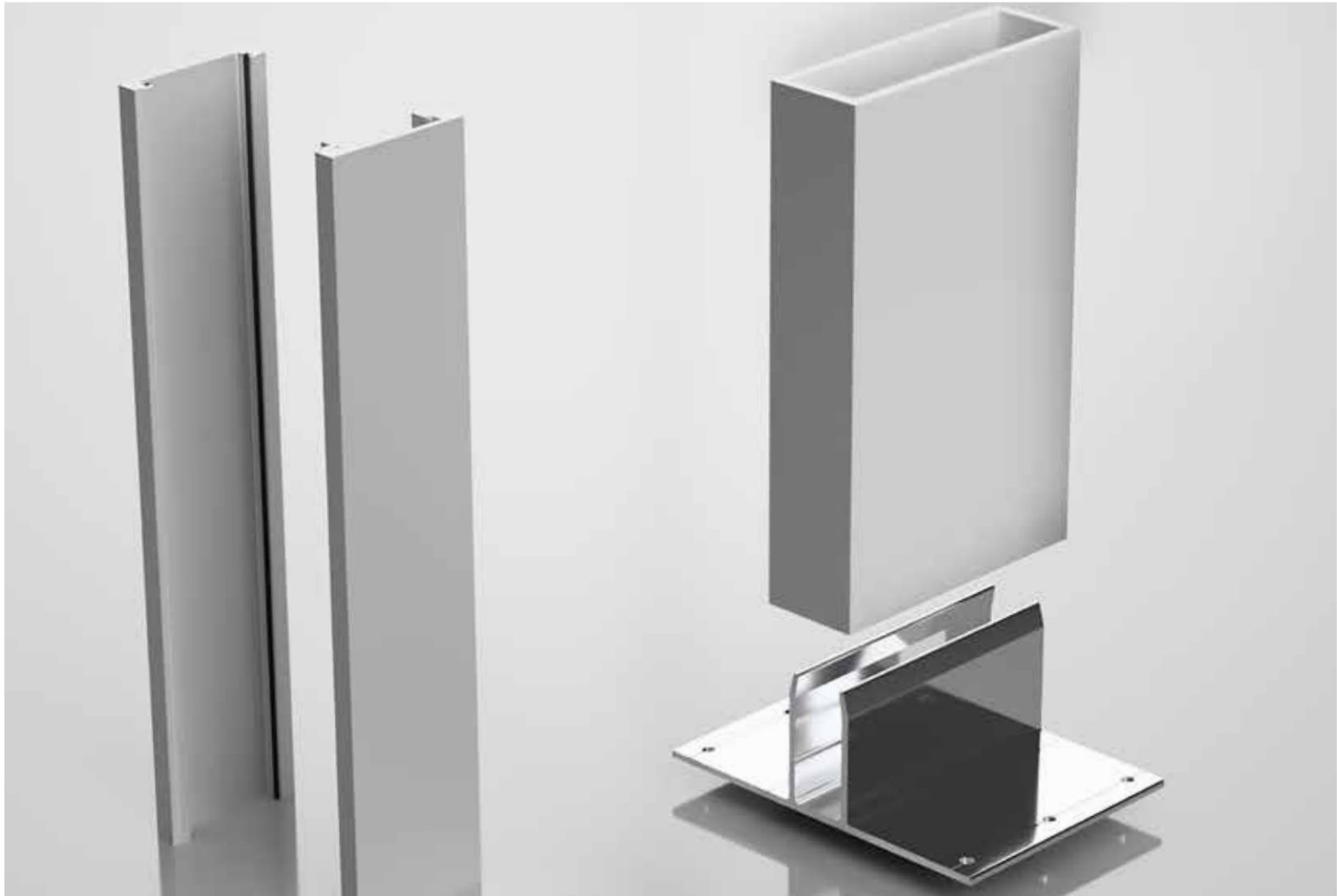


**MR-GLASS**



**MG-150**

EXTRUDED ALUMINUM  
UNCLIPPED / CLIPPED MULLIONS



### MG-150 UNCLIPPED MULLION

- Has been designed with the installer in mind. The objective is to reduce the installation work and time by eliminating the anchoring clips.
- Take advantage of the extrusions of the systems that are connecting, increasing the inertia of the resulting composition mullion.
- Validated for vertical and horizontal applications.
- Available in two sizes: 1" x 3" and 1" x 4".
- Spans up to 120". DP up to 150 PFS.

### MG-150 CLIPPED MULLION

- Include traditional 1" x 3", 1" x 4", 2" x 4", 2" x 6" standard and heavy.
- Included a 2" x 8" x 1/4" that can be used as a steel column substitute in many cases.

**FLORIDA PRODUCT APPROVAL**  
FL #40673.1 LMI (CLIPPED)  
FL #40673.2 LMI (UNCLIPPED)

SALES@MRGLASSWINDOWS.COM  
WWW.MRGLASSWINDOWS.COM  
8051 NW 79TH PL, MEDLEY, FL 33166





**MR-GLASS**



**MG-3500**

**IMPACT RESISTANT RESIDENTIAL  
OUTSWING ENTRY DOOR**



- Meets Florida Building Code for High-Velocity Hurricane Zone. Large missile rated.
- Modern and slim design with sizes up to 59" x 130" for one-panel doors and 80" x 120" for two-panel doors. Can be combined with matching sidelites.
- Multi-point lock with a 16 mm stainless steel faceplate. Minimum 8-point lock.
- Glazing capabilities include insulated laminated glass and solid panels. Enhanced thermal performance with low-E coating available.
- Day latch option.
- Ball bearing stainless steel hinges.
- Midrail (true divider) for glass or infill panel combinations.
- Infill glass or panel decorations with the use of stainless steel finish, combinations of colors, and wood grain.
- Powder-coated aluminum finish. Meets AAMA 2604 requirements (5-year warranty). AAMA 2605 is also available (10-year warranty).
- Several 92mm trims available.

**FLORIDA PRODUCT APPROVAL**  
FL #26942.2 LMI

[SALES@MRGLASSWINDOWS.COM](mailto:SALES@MRGLASSWINDOWS.COM)  
[WWW.MRGLASSWINDOWS.COM](http://WWW.MRGLASSWINDOWS.COM)  
8051 NW 79TH PL, MEDLEY, FL 33166





**COMMERCIAL**  
PRODUCT



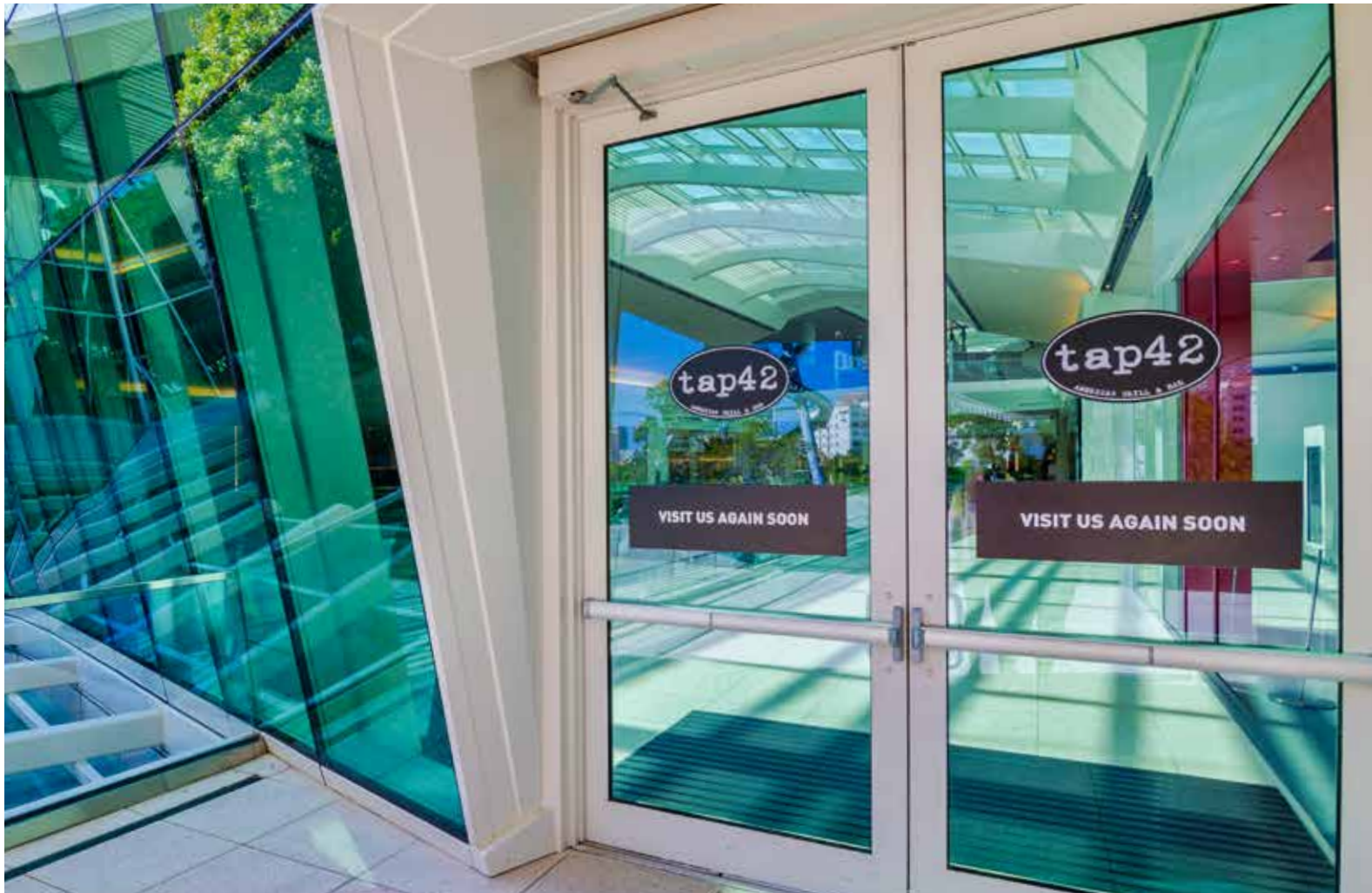


**MR-GLASS**



**MG-500**

**IMPACT RESISTANT OUTSWING  
COMMERCIAL DOOR**



- Meets Florida Building Code for High Velocity Hurricane Zone. Large missile rated.
- Sturdy 2 1/4" frame thick. 5" Medium Stile Commercial Door. Assembled via shear blocks and TIG welded for added strength.
- Single and Double door. Maximum dimensions with transom: 99 1/2" x 144" (double) and 51 1/2" x 144" (single).
- Max Pressure for single door +/- 120 PSF. For double door up to +/- 90 PSF.
- Glazing capabilities: 9/16" HS laminated and 1-1/8" insulated laminated.
- Options of high threshold (Water Rated) and ADA threshold (not water rated).
- Can accommodate transoms and mates with storefront MG-5000 without necessity of additional mullions.
- Push and Pull Handles. Concealed 3 point locks as well as panic devices.
- 4" x 4-3/4" Stainless steel all bearing hinges and offset pivots.
- Powder coating aluminum finish. Meets AAMA 2604 exigencies (5 year warranty) AAMA 2605 is also available (10 year warranty).

**FLORIDA PRODUCT APPROVAL**

FL #27001.1 LMI - FL #27001.2 LMI

DADE COUNTY NOTICE OF ACCEPTANCE (N.O.A.) #18-0314.07

[SALES@MRGLASSWINDOWS.COM](mailto:SALES@MRGLASSWINDOWS.COM)

[WWW.MRGLASSWINDOWS.COM](http://WWW.MRGLASSWINDOWS.COM)

8051 NW 79TH PL, MEDLEY, FL 33166





**MR-GLASS**



**MG-2000**

IMPACT RESISTANT  
CURTAIN WALL SYSTEM



- Meets Florida Building Code for High Velocity Hurricane Zone. Large missile rated.
- Toggle glazing system with the sought after 4-side silicone appearance.
- 2-3/4" mullion back. Max. Span with heavy mullion: 17'-4". Max Span. with standard mullion 12'-6". Max Design Pressure +90/-100 PSF.
- Stick built structure receives the glazed panels to be inserted and fixed with toggles.

- Glass is structurally glazed in shop for maximum quality control.
- Glazing capabilities: 9/16" HS laminated and 1-5/16" insulated laminated.
- Easy to install.
- Powder Coating aluminum finish for superb quality and environmentally friendly operation. Meets AAMA 2604 exigencies (5 year warranty). AAMA 2605 is also available (10 year warranty).

**FLORIDA PRODUCT APPROVAL**  
FL #27401.1 SMI - FL #27401.2 LMI

**SALES@MRGLASSWINDOWS.COM**  
**WWW.MRGLASSWINDOWS.COM**  
**8051 NW 79TH PL, MEDLEY, FL 33166**





**MR-GLASS**



**MG-2530**

**IMPACT RESISTANT ALUMINUM  
AND GLASS RAILING SYSTEM**



- Meets Florida Building Code for High Velocity Hurricane Zone. Large and Small Missile Impact Resistant.
- Pre-glazed railing system.
- Dry glazed. Glass 7/16" laminated heat strengthened.
- Posts embedded in non-shrinking high resistance grouting.
- Posts aluminum sections of 3-5/16" x 2-3/4".
- Glass supported at top and bottom rails only with

polished vertical edges creating an aesthetically appealing 1/4" joint in front of the posts.

- Variety of railing cap designs.
- Post spacing 48" max. at 44" height.
- Maximum pressure: 110 PSF.
- Powder Coating aluminum finish for superb quality and environmentally friendly operation. Meets AAMA 2604 exigencies (5 year warranty) AAMA 2605 is also available (10 year warranty).

**DADE COUNTY  
NOTICE OF ACCEPTANCE (N.O.A.)  
#23-0731.05**

**SALES@MRGLASSWINDOWS.COM  
WWW.MRGLASSWINDOWS.COM  
8051 NW 79TH PL, MEDLEY, FL 33166**





**MR-GLASS**



**MG-5000**

**IMPACT RESISTANT  
STOREFRONT WALL SYSTEM**



- Meets Florida Building Code for High Velocity Hurricane Zone. Large missile rated.
- Aluminum Frame 1-3/4" x 5" with recess glazing
- Mates with commercial door MG-500 without necessity of additional mullions.
- Glazing capabilities: 9/16" HS laminated.
- Maximum dimensions: 60" x 144" in multiple units, with single jumbo size up to 84" x 180".
- Maximum pressure: 130 PSF.
- Powder Coating aluminum finish for superb quality and environmentally friendly operation. Meets AAMA 2604 exigencies (5 year warranty) AAMA 2605 is also available (10 year warranty).

**FLORIDA PRODUCT APPROVAL**

FL #27000.1 LMI

DADE COUNTY NOTICE OF ACCEPTANCE (N.O.A.) #18-0314.06

[SALES@MRGLASSWINDOWS.COM](mailto:SALES@MRGLASSWINDOWS.COM)

[WWW.MRGLASSWINDOWS.COM](http://WWW.MRGLASSWINDOWS.COM)

8051 NW 79TH PL, MEDLEY, FL 33166





**MR-GLASS**



**MG-6000**

IMPACT RESISTANT  
STOREFRONT WALL SYSTEM



- Meets Florida Building Code for High Velocity Hurricane Zone. Large missile rated.
- Shop glazed storefront with a sturdy frame of 5" and front glazing.
- Glazing capabilities: 9/16" HS laminated and 1-5/6" insulated laminated glass.
- Maximum dimensions: 48" x 144" in multiple units.
- Maximum pressures: +100 /-145 PSF.
- Powder Coating aluminum finish for superb quality and environmentally friendly operation. Meets AAMA 2604 exigencies (5 year warranty) AAMA 2605 is also available (10 year warranty).

**FLORIDA PRODUCT APPROVAL**  
FL #18411.1 LMI

[SALES@MRGLASSWINDOWS.COM](mailto:SALES@MRGLASSWINDOWS.COM)  
[WWW.MRGLASSWINDOWS.COM](http://WWW.MRGLASSWINDOWS.COM)  
8051 NW 79TH PL, MEDLEY, FL 33166





**MR-GLASS**



**MG-7000**

IMPACT RESISTANT  
STICK CURTAIN WALL SYSTEM



- Meets Florida Building Code for High Velocity Hurricane Zone. Large missile rated.
- Aluminum frame 2 3/4" x 7 13/16" with recess glazing.
- Pressure plate and 2 side silicone versions.
- Integrate commercial doors.
- Aluminum and glass to glass corners.
- Glazing capabilities: 9/16" HS laminated and 1 5/16" insulated laminated.
- Single and multiple spans.
- Max. height in single span: 196".
- Max. pressure: +/- 130 PSF.
- Powder Coating aluminum finish for superb quality and environmentally friendly operation. Meets AAMA 2604 exigencies (5 year warranty) AAMA 2605 is also available (10 year warranty).

**FLORIDA PRODUCT APPROVAL**  
FL #27101.1 LMI

[SALES@MRGLASSWINDOWS.COM](mailto:SALES@MRGLASSWINDOWS.COM)  
[WWW.MRGLASSWINDOWS.COM](http://WWW.MRGLASSWINDOWS.COM)  
8051 NW 79TH PL, MEDLEY, FL 33166





**MR-GLASS**



**MG-275**

**NON-IMPACT  
COMMERCIAL DOOR**



- Non-impact rated commercial door. Also suited for interior applications.
- Designed and tested to comply with FBC 2020.
- Narrow stile 2 3/4". Medium stile available.
- Dry glazed. Glass 3/16" Fully Tempered.
- Mates with commercial storefront system MG 4500 without the necessity of intermediate mullions.
- Single and Double Doors. Maximum dimensions with transom are 39-5/8" x 120" (single) and 75-5/8" x 120" (double).
- Maximum pressure: +65/-75 PSF.
- Saddle threshold.
- Push and Pull Handles. Concealed 3-point locks as well as panic devices.
- 4" x 4-3/4" Stainless steel all bearing hinges and offset pivots.
- Powder Coating aluminum finish for superb quality and environmentally friendly operation. Meets AAMA 2604 exigencies (5 year warranty) AAMA 2605 is also available (10 year warranty).

**FLORIDA PRODUCT APPROVAL**  
FL #39839.1 NI

**SALES@MRGLASSWINDOWS.COM**  
**WWW.MRGLASSWINDOWS.COM**  
**8051 NW 79TH PL, MEDLEY, FL 33166**





**MR-GLASS**



**MG-4500**

**NON-IMPACT  
STOREFRONT SYSTEM**



- Non-impact rated commercial storefront system. Also suited for interior applications.
- Designed and tested to comply with FBC 2023.
- Pre-glazed units to be snapped in place.
- Aluminum members 1 3/4" x 4 1/2".
- Dry glazed. Glass 1/4" Fully Tempered Glass.
- Mates with commercial door MG-275.
- Maximum dimensions: 48" x 120" per unit.
- Max pressure +/- 100 PSF.
- Powder Coating aluminum finish for superb quality and environmentally friendly operation. Meets AAMA 2604 exigencies (5 year warranty) AAMA 2605 is also available (10 year warranty).

**FLORIDA PRODUCT APPROVAL**  
FL #39786.1 NI

**SALES@MRGLASSWINDOWS.COM**  
**WWW.MRGLASSWINDOWS.COM**  
**8051 NW 79TH PL, MEDLEY, FL 33166**





**MR-GLASS**



**LOUVERS**

IMPACT RESISTANT  
LOUVERS SYSTEM



- Meets HVHZ requirements and standards.
- Small elegant, yet strong blade section.  
2 1/4" x 1 5/8" with 0.08" minimum wall thickness.
- Max Dimensions in one module 61" x 168"
- Available is stand alone version with Fix Window Frame MG450.
- Available as a subframe to be inserted in any door,

- storefront, between mullions or any opening, and still meets HVHZ requirements.
- Design Pressure +/- 80 PSF.
- Powder Coating aluminum finish. AAMA 2604 (5 year warranty) comes standard. AAMA 2605 (10 year warranty also available).
- Not rated for water infiltration.

**FLORIDA PRODUCT APPROVAL**  
FL #39859.1 LMI

[SALES@MRGLASSWINDOWS.COM](mailto:SALES@MRGLASSWINDOWS.COM)  
[WWW.MRGLASSWINDOWS.COM](http://WWW.MRGLASSWINDOWS.COM)  
8051 NW 79TH PL, MEDLEY, FL 33166





# OUR LOCATIONS

**MAIN BUILDING - SHOWROOM**  
8051 NW 79<sup>th</sup> PL, Medley, FL 33166



8120 NW 84<sup>th</sup> St,  
Medley, FL 33166



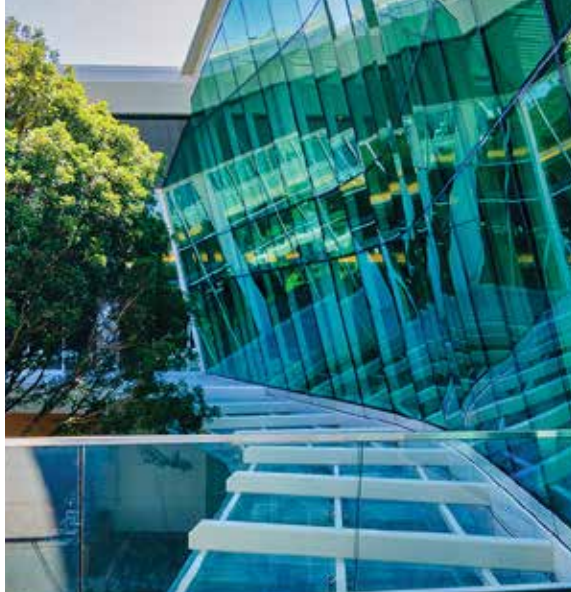
5770 Miami Lakes Dr,  
Miami Lakes, FL 33014



7700 NW 81<sup>st</sup> Pl,  
Miami, FL 33166

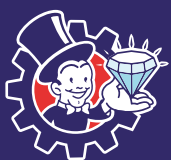


[SALES@MRGLASSWINDOWS.COM](mailto:SALES@MRGLASSWINDOWS.COM) | [WWW.MRGLASSWINDOWS.COM](http://WWW.MRGLASSWINDOWS.COM)





**VISIT OUR  
SHOWROOM**



**MR-GLASS**

SALES@MRGLASSWINDOWS.COM  
WWW.MRGLASSWINDOWS.COM  
8051 NW 79TH PL, MEDLEY, FL 33166

